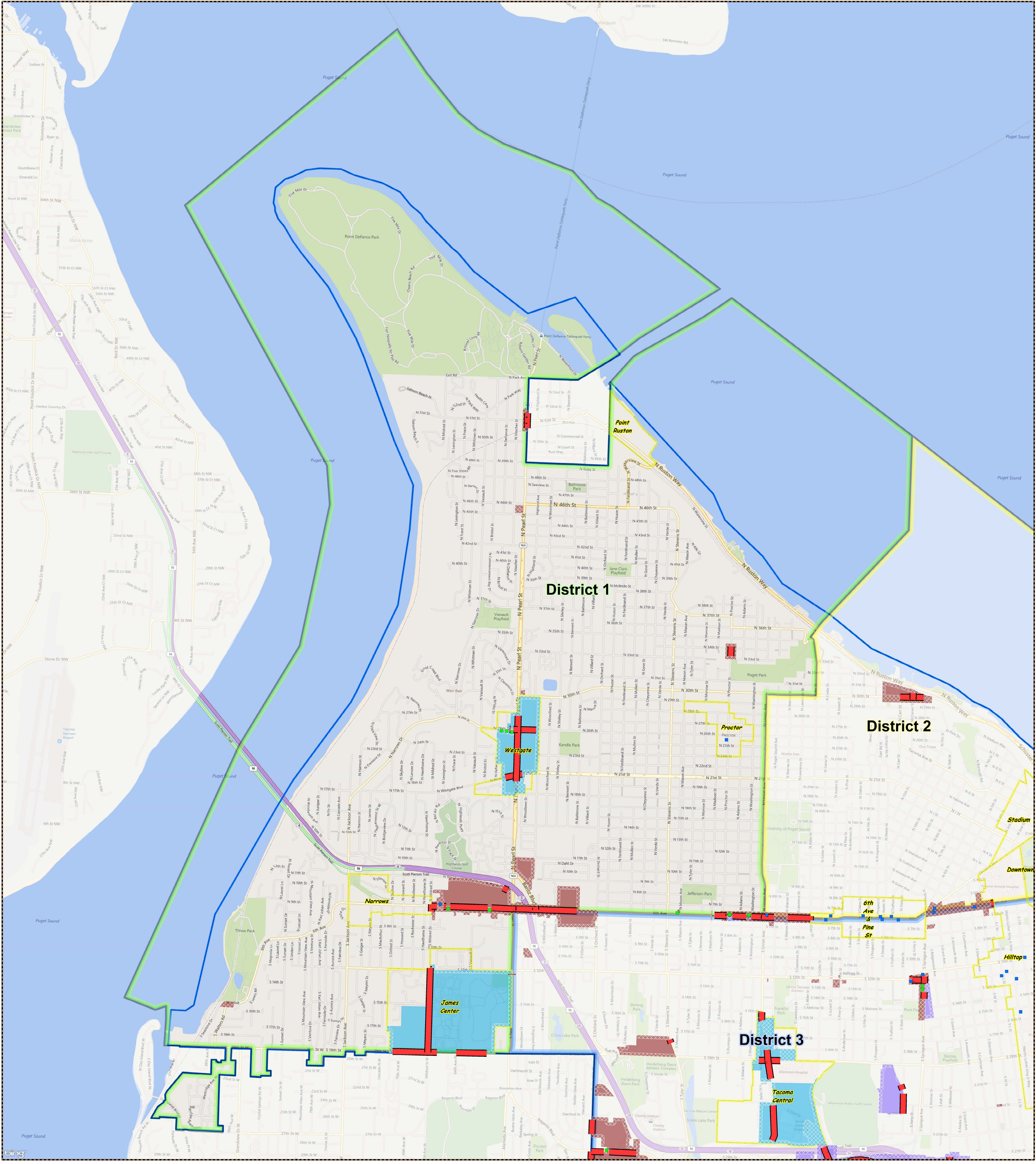


# Billboards - 100' Option

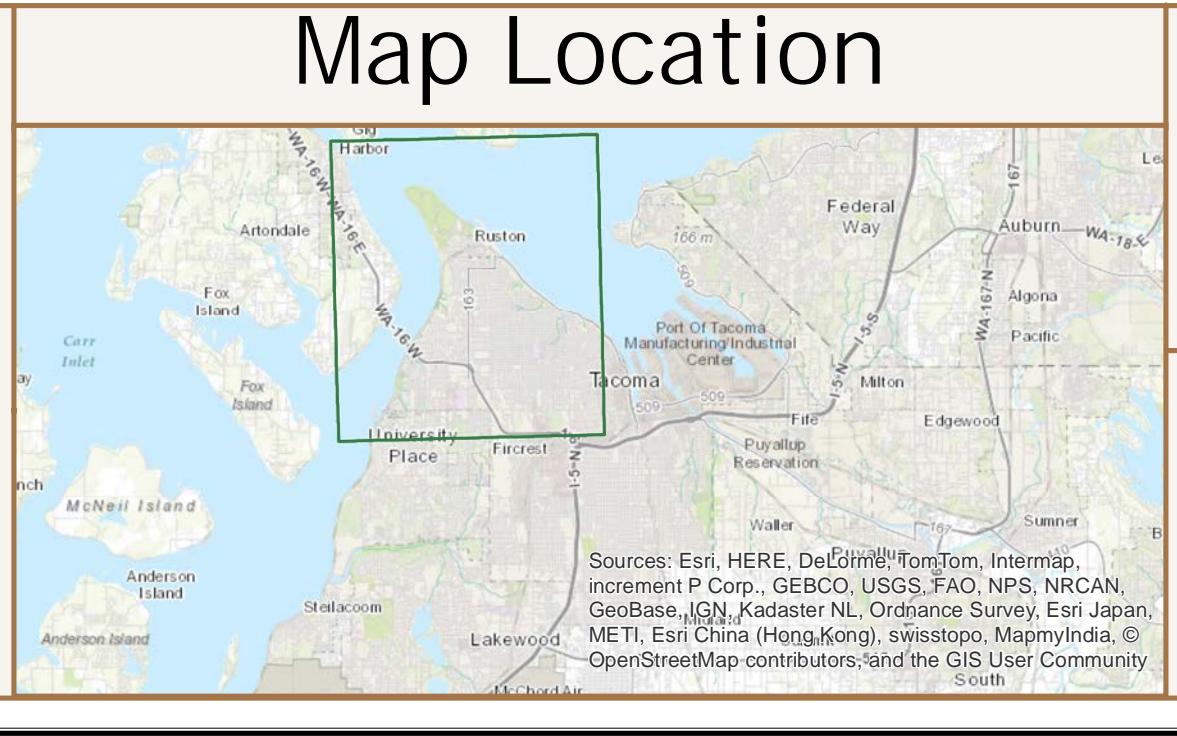
## City of Tacoma By Councilmanic District

### District: 1



- Conforming Billboards (185)
- Non-conforming Billboards (126)
- Arterials Available (100' - 49.5 total miles)
- Buffer Area within Inclusion Zone (100')
- Downtown (DCC; DMU; WR - 18 billboards, 6.4 miles available)
- Mixed Use (CCX; CUX; UCX - 20 billboards, 8.9 miles available)
- Commercial (C2 - 70 billboards, 7.5 miles available)
- Industrial (M1; M2; PMI - 77 billboards, 26.7 miles available)
- Mixed Use Centers

*This map represents a preliminary analysis of the proposed buffering standards. It is not 100% accurate and is subject to further review and refinement. Verification of the availability of a particular site may necessitate more detailed analysis to ensure the accurate location of buffered uses in the particular area.*



City of Tacoma  
Community & Economic Development Department  
GIS Analysis & Data Services

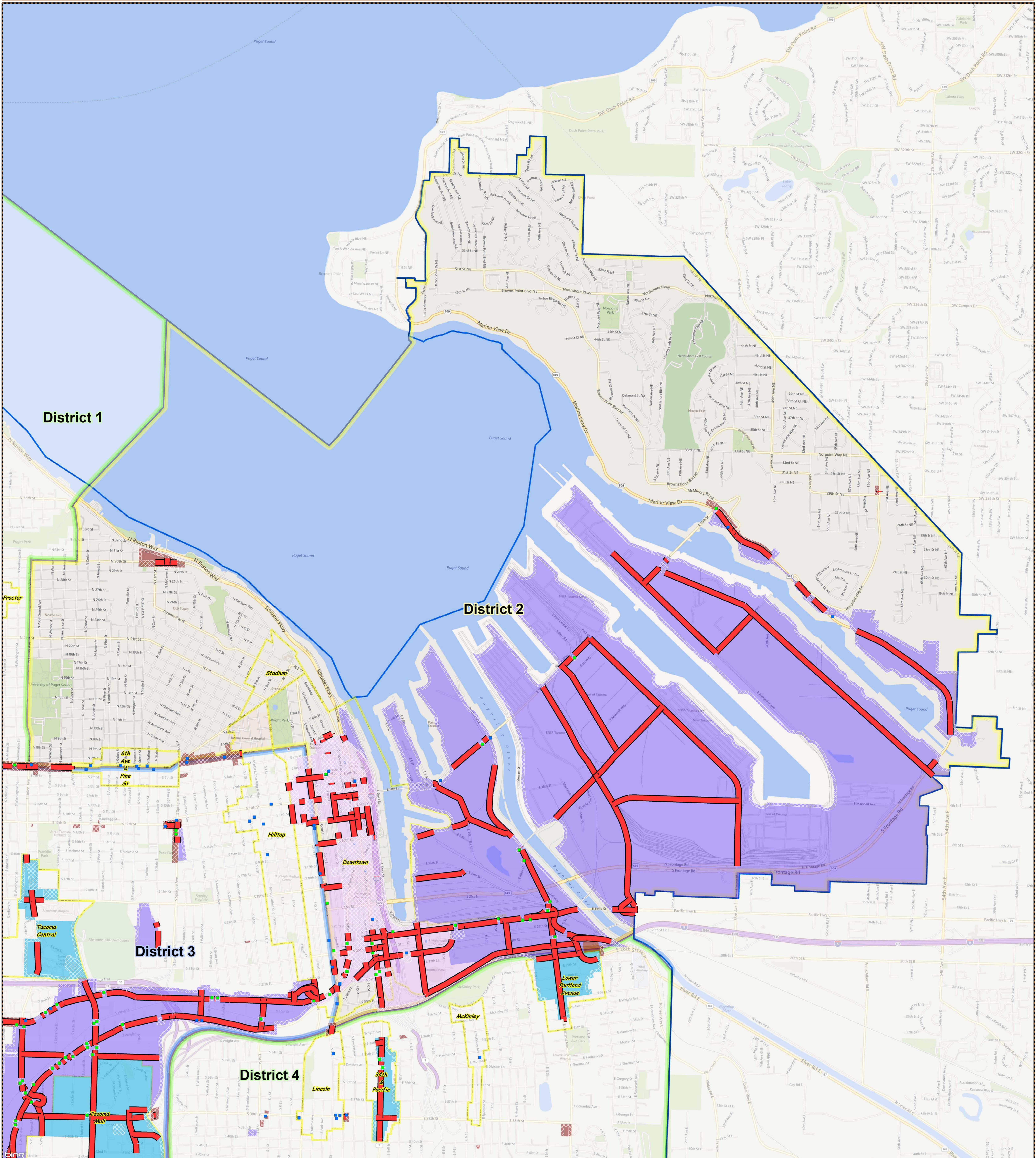
1400 0 1400 2800 4200  
Feet

This drawing is neither a legally recorded map nor a survey and is not intended to be used as one. It is to be used for reference purposes only.

# Billboards - 100' Option

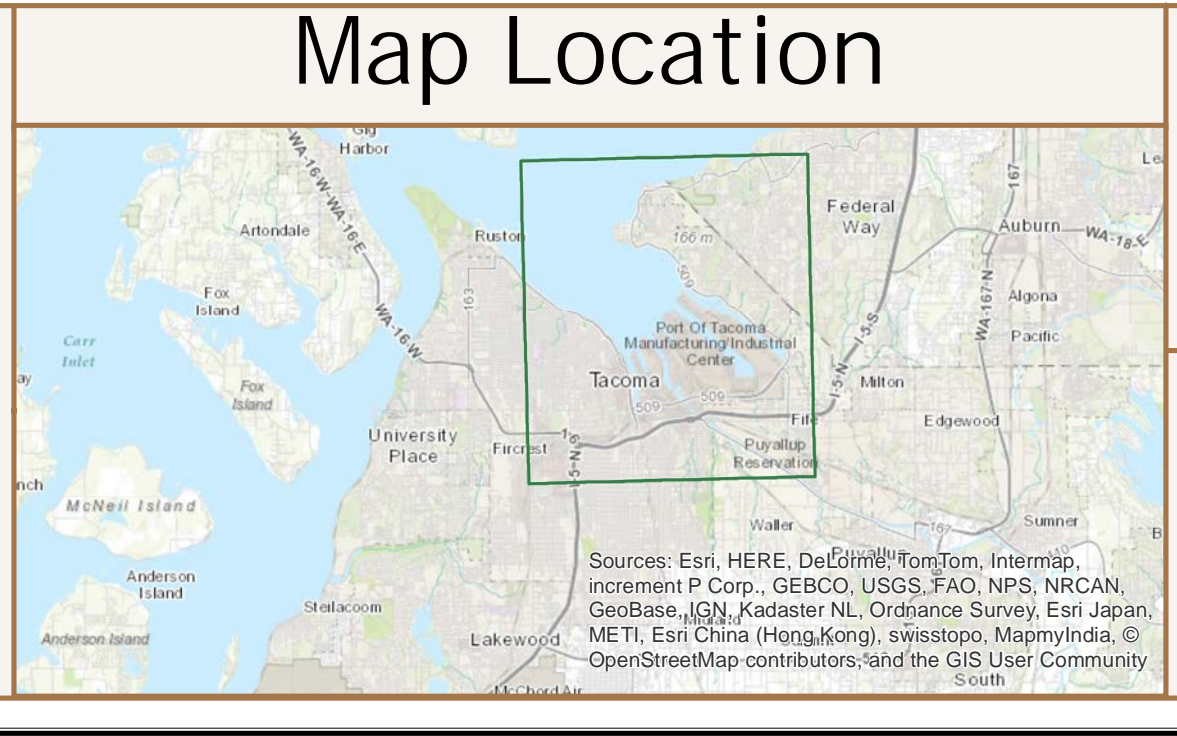
## City of Tacoma By Councilmanic District

### District: 2



- Conforming Billboards (185)
- Non-conforming Billboards (126)
- Arterials Available (100' - 49.5 total miles)
- Buffer Area within Inclusion Zone (100')
- Downtown (DCC; DMU; WR - 18 billboards, 6.4 miles available)
- Mixed Use (CCX; CUX; UCX - 20 billboards, 8.9 miles available)
- Commercial (C2 - 70 billboards, 7.5 miles available)
- Industrial (M1; M2; PMI - 77 billboards, 26.7 miles available)
- Mixed Use Centers

*This map represents a preliminary analysis of the proposed buffering standards. It is not 100% accurate and is subject to further review and refinement. Verification of the availability of a particular site may necessitate more detailed analysis to ensure the accurate location of buffered uses in the particular area.*



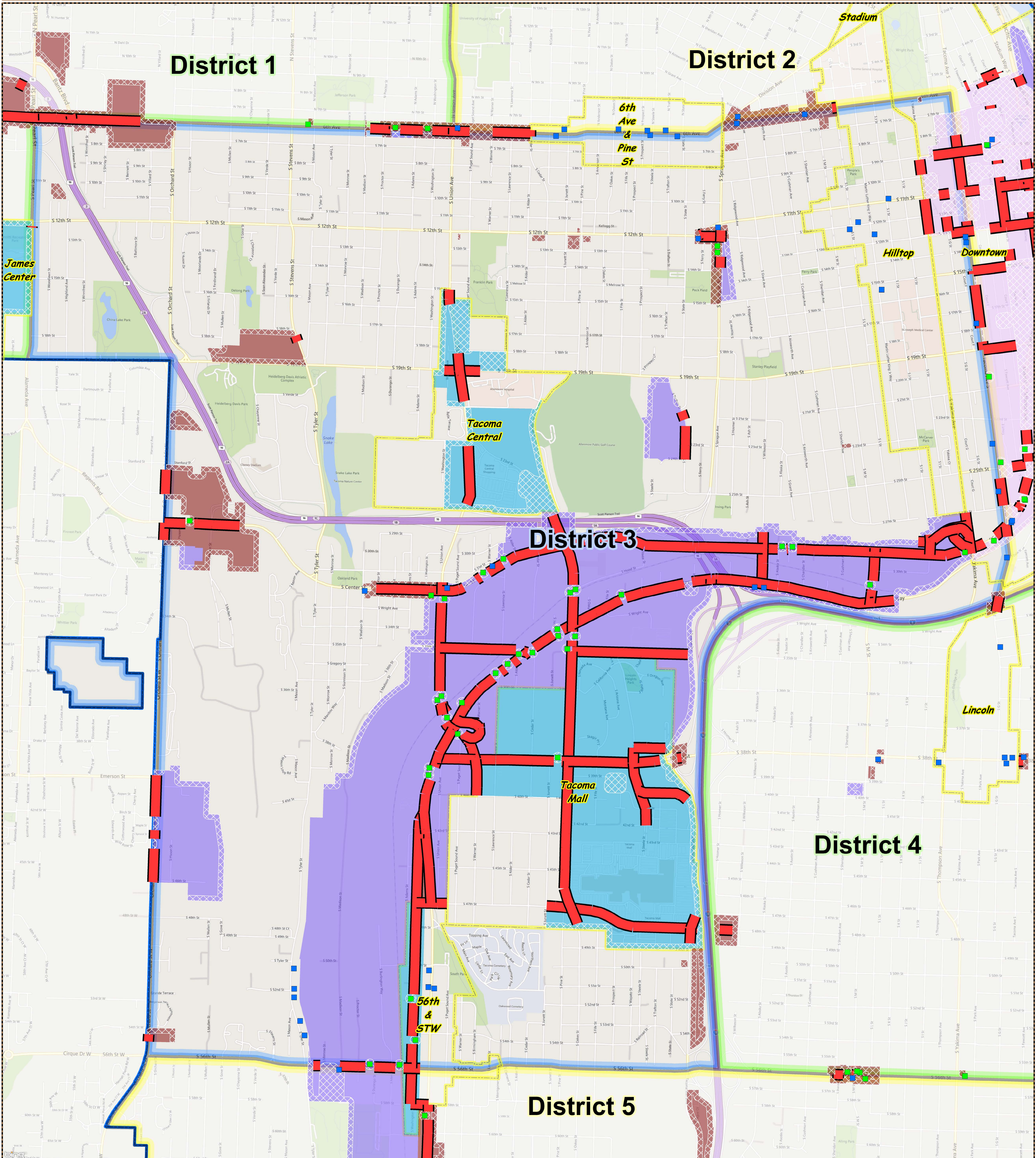
City of Tacoma  
Community & Economic Development Department  
GIS Analysis & Data Services

This drawing is neither a legally recorded map nor a survey and is not intended to be used as one. It is to be used for reference purposes only.

# Billboards - 100' Option

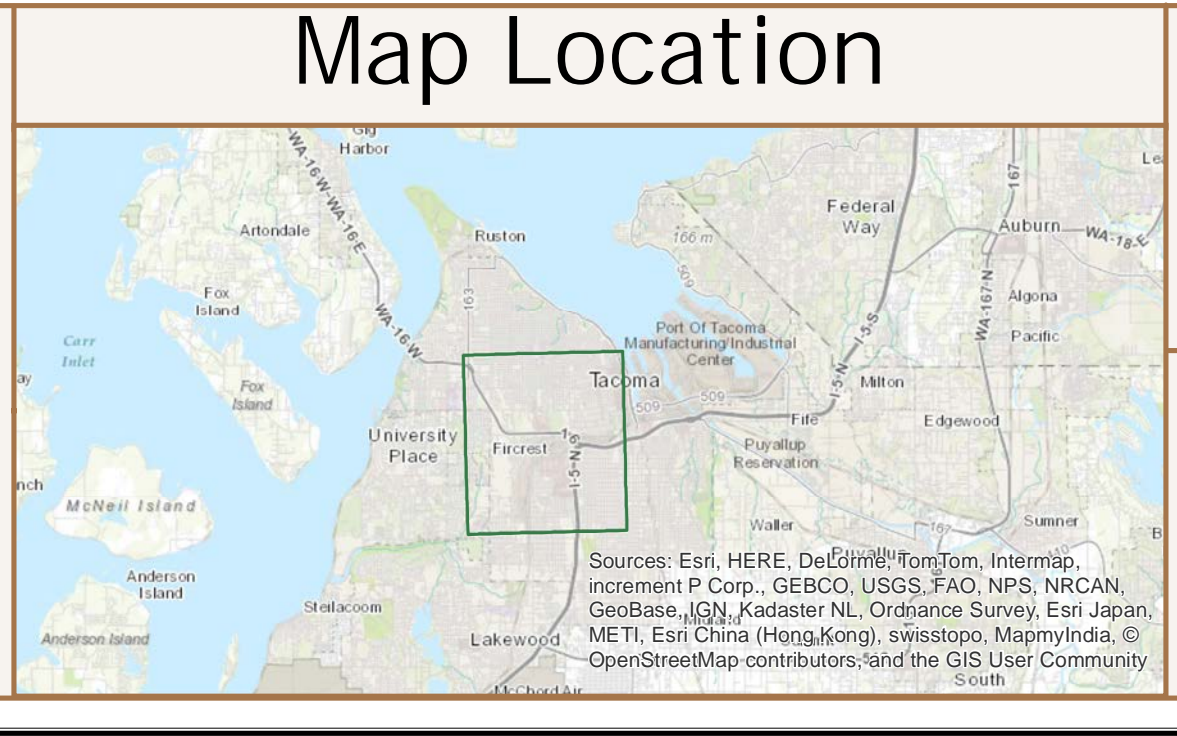
## City of Tacoma By Councilmanic District

### District: 3



- Conforming Billboards (185)
- Non-conforming Billboards (126)
- Arterials Available (100' - 49.5 total miles)
- Buffer Area within Inclusion Zone (100)
- Downtown (DCC; DMU; WR - 18 billboards, 6.4 miles available)
- Mixed Use (CCX; CUX; IUX - 20 billboards, 8.9 miles available)
- Commercial (C2 - 70 billboards, 7.5 miles available)
- Industrial (M1; M2; PMI - 77 billboards, 26.7 miles available)
- Mixed Use Centers

*This map represents a preliminary analysis of the proposed buffering standards. It is not 100% accurate and is subject to further review and refinement. Verification of the availability of a particular site may necessitate more detailed analysis to ensure the accurate location of buffered zones in the particular area.*



City of Tacoma  
Community & Economic Development Department  
GIS Analysis & Data Services

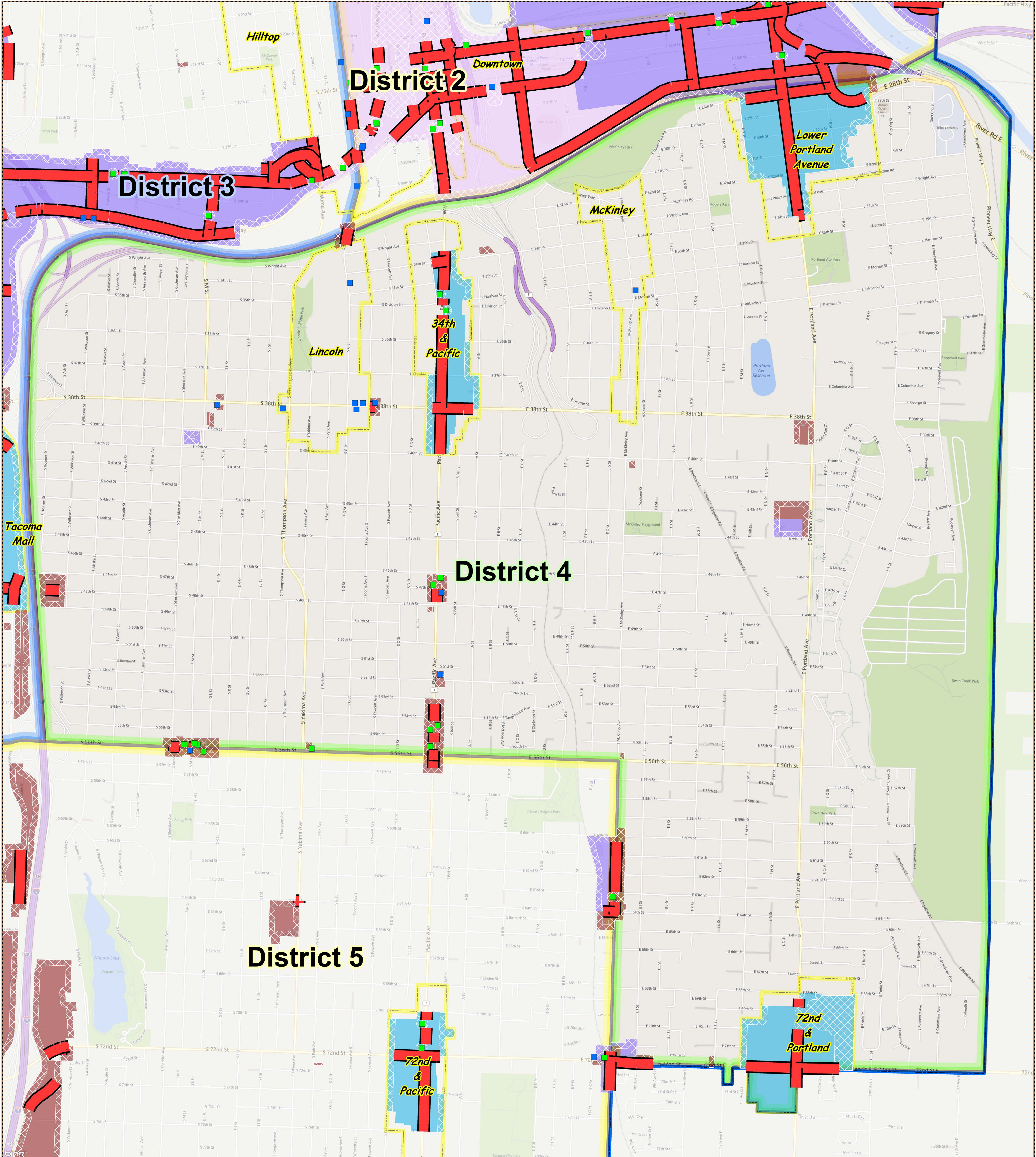
880 0 880 1760 2640  
Feet

This drawing is neither a legally recorded map nor a survey and is not intended to be used as one. It is to be used for reference purposes only.

# Billboards - 100' Option

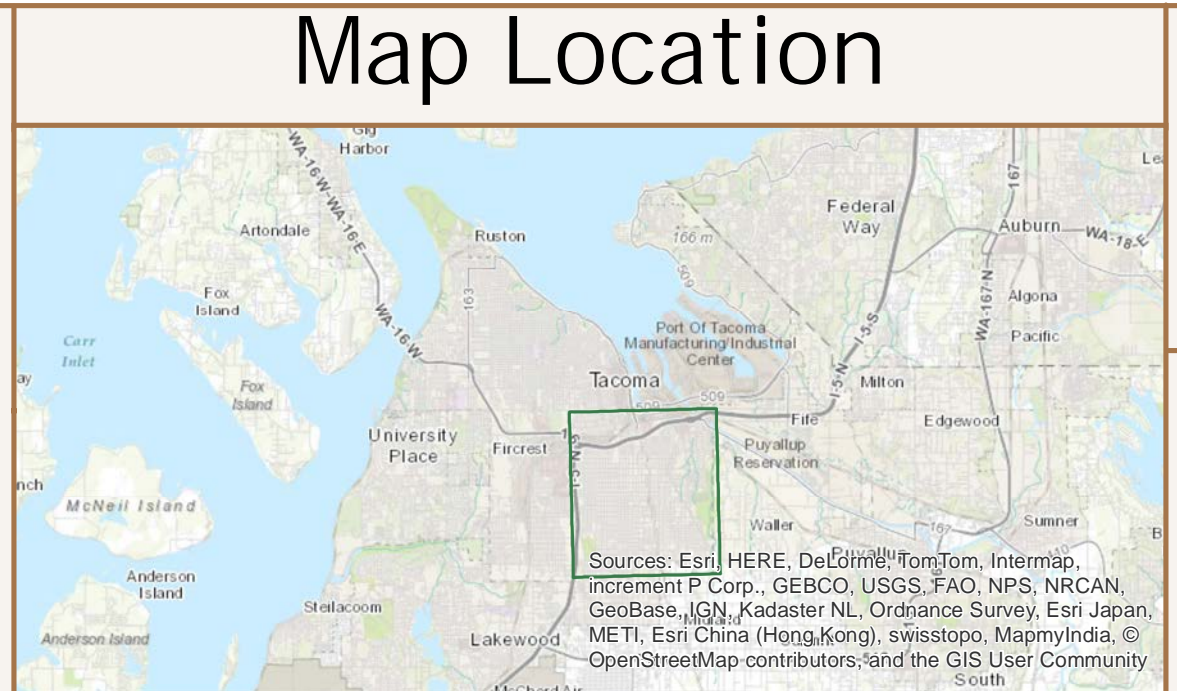
## City of Tacoma By Councilmanic District

### District: 4



- Conforming Billboards (185)
- Non-conforming Billboards (126)
- Arterials Available (100' - 49.5 total miles)
- Buffer Area within Inclusion Zone (100')
- Downtown (DCC; DMU; WR - 18 billboards, 6.4 miles available)
- Mixed Use (CX; CUX; UXC - 20 billboards, 8.9 miles available)
- Commercial (C2 - 70 billboards, 7.5 miles available)
- Industrial (M1; M2; PMI - 77 billboards, 26.7 miles available)
- Mixed Use Centers

*This map represents a preliminary analysis of the proposed buffering standards. It is not 100% accurate and is subject to further review and refinement. Verification of the availability of a particular site may necessitate more detailed analysis to ensure the accurate location of buffered uses in the particular area.*



City of Tacoma  
Community & Economic Development Department  
GIS Analysis & Data Services

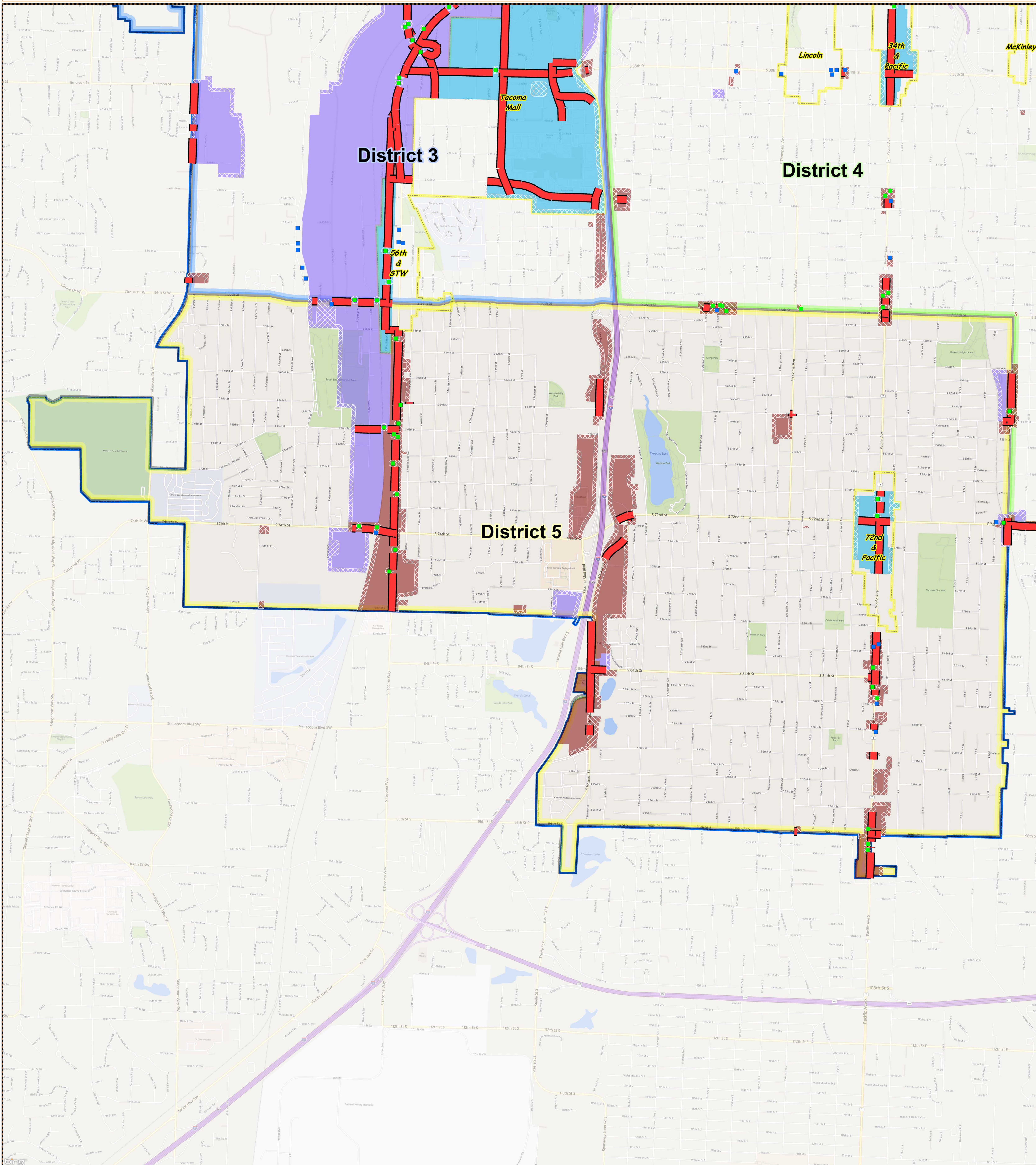
820 0 820 1640 2480  
Feet

This drawing is neither a legally recorded map nor a survey and is not intended to be used as one. It is to be used for reference purposes only.

# Billboards - 100' Option

City of Tacoma By Councilmanic District

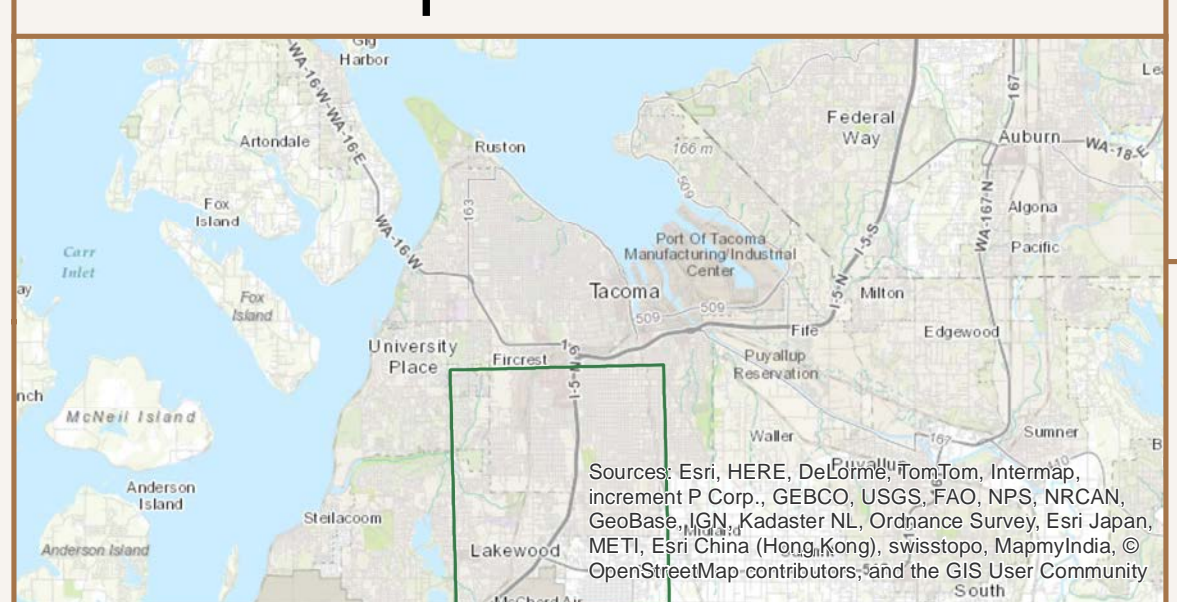
*District: 5*



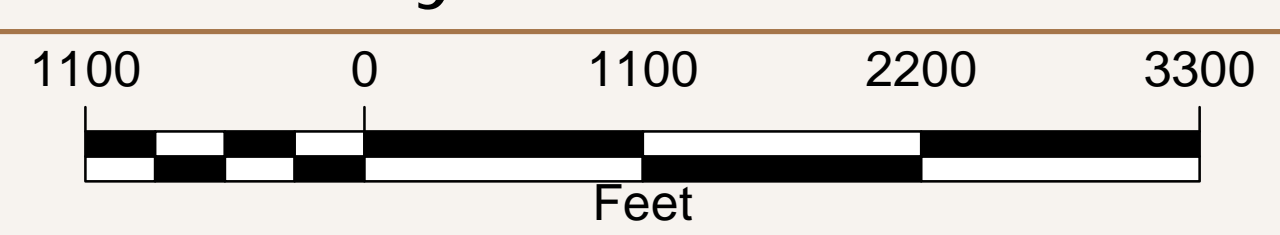
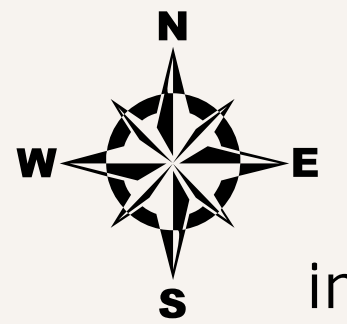
- Conforming Billboards (185)
- Non-conforming Billboards (126)
- Arterials Available (100' - 49.5 total miles)
- Buffer Area within Inclusion Zone (100')
- Downtown (DCC; DMU; WR - 18 billboards, 6.4 miles available)
- Mixed Use (CCX; CUX; UCX - 20 billboards, 8.9 miles available)
- Commercial (C2 - 70 billboards, 7.5 miles available)
- Industrial (M1; M2; PMI - 77 billboards, 26.7 miles available)
- Mixed Use Centers

*This map represents a preliminary analysis of the proposed buffering standards. It is not 100% accurate and is subject to further review and refinement. Verification of the availability of a particular site may necessitate more detailed analysis to ensure the accurate location of buffered uses in the particular area.*

### Map Location



City of Tacoma  
Community & Economic Development Department  
GIS Analysis & Data Services



This drawing is neither a legally recorded map nor a survey and is not intended to be used as one. It is to be used for reference purposes only.

